
Part 12

Telecommunication

Facilities

12.1

Application

12.1 Application

This Part sets out controls relating to telecommunication facilities in the Campbelltown Local Government Area.

12.2 Background

New telecommunication facilities require development consent from Council unless they are exempted by Commonwealth or State legislation. These exemptions include certain 'low impact' and general infrastructure type facilities, as provided by the Commonwealth Telecommunications (Low Impact Facilities) Determination 1997 and State Environmental Planning Policy (Infrastructure) 2007.

All development applications lodged with Council for telecommunication facilities will be assessed in accordance with the provisions of this Part.

Objectives:

- To minimise the number of telecommunication towers that need to be erected within the Campbelltown Local Government Area.
- To ensure telecommunication facilities are designed to minimise the public's exposure to electromagnetic radiation (EMR) and are restricted to locations where EMR levels are consistent with or below the nationally adopted exposure threshold criteria.
- To minimise the visual impact of telecommunication facilities by encouraging innovative design outcomes.
- To ensure telecommunications and radio-communications infrastructure are appropriately sited having regard to any heritage buildings or Heritage Conservation Areas.
- To minimise any potential significant adverse amenity impacts upon the locality.
- To facilitate the provision of efficient and reliable telecommunication services in the Campbelltown Local Government Area.

12.3 General Requirements

- a) A network masterplan shall be provided by the applicant showing the proposal in the context of all other similar infrastructure types in order to identify opportunities for co-location or sharing of facilities.
- b) The applicant shall demonstrate that co-location opportunities have been adequately pursued where new stand

12.3 General Requirments

alone telecommunication facilities are proposed. This shall include information to demonstrate:

- i) The possibility of sharing equipment, via the use of combiners or similar technology;
 - ii) Existing towers and poles or other appropriate structures should be investigated for appropriateness for the sharing of antennas.
- c) Transmitting roof top antennas and towers should preferably be located in industrial or business zones, rather than residential zones or areas that include dwellings.
- d) Telecommunication facilities are to be sited to avoid locations which are visually prominent in the landscape, particularly when viewed from the public domain.
- e) For new towers a photomontage of the proposal must be submitted to assist with the assessment of visual impact.
- f) The applicant must demonstrate that all reasonable measures to reduce the visual impact of the proposal have been examined, including:
- i) Co-location and use of existing structures;
 - ii) Innovative design to harmonise with the existing setting;
 - iii) Use of vegetation for screening;
 - iv) Use of materials and finishes consistent with surroundings; and
 - v) Compact and slim line construction techniques.
- g) No advertising signs shall be permitted on any telecommunication facilities in:
- i) Industrial areas;
 - ii) Rural areas; and
 - iii) Low-use open space.

Note:

Under the CLEP, telecommunications facility means:

- (a) any part of the infrastructure of a telecommunications network, or
- (b) any line, cable, optical fibre, fibre access node, interconnect point equipment, apparatus, tower, mast, antenna, dish, tunnel, duct, hole, pit, pole or other structure in connection with a telecommunications network, or
- (c) any other thing used in or in connection with a telecommunications network.



Figure 12.3.1 - An example of the negative visual impact of a tower on neighbouring houses.

12.4

Electromagnetic Radiation

12.4 Electromagnetic Radiation

- a) The applicant in selecting a site for telecommunication facilities, shall demonstrate to Council that a precautionary approach has been adopted with respect to minimising electromagnetic radiation (EMR) exposures to sensitive land uses such as residential areas, schools, child care centres, hospitals, aged care accommodation or areas regularly frequented by groups of children.
- b) Where possible, EMR emitting telecommunication facilities, including mobile base stations, shall be located in the following land use areas:
 - i) Industrial areas;
 - ii) Rural areas; and
 - iii) Low-use open space.
- c) Where telecommunication facilities are proposed within 300 metres of a sensitive land use, the applicant shall demonstrate that no viable alternative sites are available.
- d) For all EMR emitting telecommunication facilities, documentary evidence is required from a suitably qualified person which analyses the cumulative effect of the proposal and demonstrates compliance with the relevant Australian exposure standard.
- e) Development applications for telecommunication facilities shall include measures to restrict public access. Approaches to the facility must contain appropriate signs warning of EMR and provide contact details for the site owner and / or site manager.

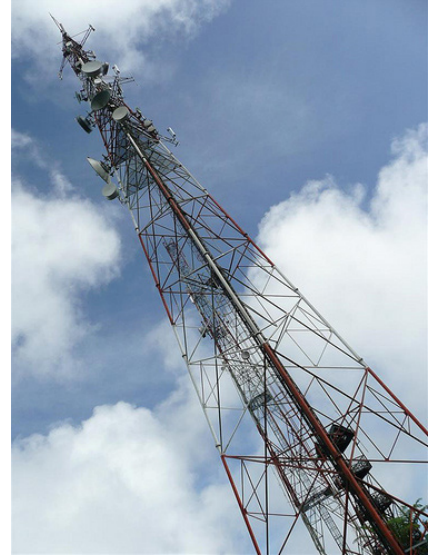


Figure 12.4.1 - An example of a telecommunication facility tower.

12.5 Landscaping

12.5 Landscaping

- a) For stand alone telecommunication facilities, a landscape plan must be submitted to Council that provides plantings of a suitable scale to reduce the visual impact of the proposal, and where possible screen the facility from public view.

12.6 Heritage

- a) No telecommunication facilities shall be permitted where the heritage significance of a heritage item may be adversely impacted.
- b) Where a telecommunication facility is proposed on a site occupied by or in the vicinity of a listed heritage item, a Heritage Impact Statement shall be prepared and submitted to Council.



Figure 12.6.1 - An example of a heritage listed building.

Note: A Heritage Impact Statement must be prepared by a suitably qualified person in accordance with the document “Statements of Heritage Impact” published by the NSW Heritage Branch and available for view at: www.environment.nsw.gov.au

*This page is intentionally
left blank.*