

ENTER
ONLINE

THREATENED SPECIES
**ART &
WRITING**
COMPETITION

TEACHER RESOURCE KIT





Contents

How do schools enter their artwork?	6
How do schools enter their creative writing story?	7
Waste to Art	8
Some artworks from 2022...	9
Prizes	10
- Artwork	
- Creative writing	
Award ceremony	11
Classroom learning	12
Extension activities	14
How can your school become a haven for native flora and fauna?	16
A local treasure!	18
Become an Eco-School!	19



The Macarthur region, our backyard, is home to a wide diversity of native plants and animals. Many of these plants and animals are affected by a range of impacts such as habitat loss, competition and predation from non-native species and foreign diseases. There are a range of species occurring within the local region that are at risk of extinction and have been listed as 'Threatened Species.'

The Threatened Species Art and Writing Competition (*TSAC*) is a regional environmental education program, involving Campbelltown City Council, Camden Council and Wollondilly Shire Council. The competition celebrates Biodiversity Month (*September*) and Threatened Species Day on 7 September.

The competition targets all stages of primary school, and is open to young people aged 5-12. TSAC encourages students to learn about a local threatened species and represent it in an artwork or creative writing piece.

The competition is now in its 16th year and through its cross-curricula nature has been successfully engaging primary schools in Geography, Science, Visual Arts and English throughout the Macarthur region.

HOW DO SCHOOLS ENTER THEIR ARTWORK?

The TSAC encourages schools to engage and enter as many students as possible. Schools have the opportunity to win prizes and students can also win individual prizes based on their age category.

We want you to create an artwork that celebrates the beauty and uniqueness of our threatened plants and animals.

Entering the competition is easy. Simply complete the entry form with your artwork and enter online by visiting your local Council's website, or drop it off or post it to your local Council.

- **Campbelltown City Council Civic Centre**

Customer Service Desk,
Cnr Queen and Broughton Streets,
Campbelltown

- **Camden Council Administration Building**

70 Central Avenue, Oran Park

- **Wollondilly Council Administration Building**

Customer Service Desk,
62-64 Menangle Street, Picton

By post:

Campbelltown City Council Threatened
Species Competition
PO Box 57
Campbelltown NSW 2560

Camden Council
PO BOX 183
Camden NSW 2570

Wollondilly Council
PO Box 21
Picton NSW 2571

Enter online

campbelltown.nsw.gov.au/tsac
wollondilly.nsw.gov.au
camden.nsw.gov.au

Things to remember:

- A4 Artwork Entries will be judged in the following age groups:
 - 5 to 6 years
 - 7 to 9 years
 - 10 to 12 years
- Get as creative as you like with your artwork, using as many different mediums (pens, pencils, textas, sticks, cellophane, recycled items etc) as possible.
- If you choose to enter your class under one entry form, Council asks that you label the back of each artwork with:
 - Student name
 - Class
 - Age

HOW DO SCHOOLS ENTER THEIR CREATIVE WRITING STORY?

We encourage students to write a short story that celebrates the beauty and uniqueness of our threatened plants or animals. Your story can be as creative as you like and try to include one or more of the following facts:

- where does the plant or animal live?
- what does the animal eat?
- what threats are affecting the plant or animals?
- how can we save the plants or animals from extinction?

Entry is open to writers aged 8 to 12 years.

We ask that:

- the stories be written so that they can be read to 5-6 years olds.
- your story is no longer than one A4 page.

Creative writing criteria

- 50% for three or more accurate facts about your chosen species
- 20% Creativity
- 10% grammar
- 10% structure. Beginning-middle-end

Entering the competition is easy. Simply complete the entry form with your creative writing piece and drop it off or send it to your local council:

- **Campbelltown City Council**

- **Civic Centre**

- Customer Service Desk,
Cnr Queen and Broughton Streets,
Campbelltown

- **Camden Council**

- Administration Building
70 Central Avenue, Oran Park

- **Wollondilly Council**

- Administration Building
Customer Service Desk,
62-64 Menangle Street, Picton

Enter online

campbelltown.nsw.gov.au/tsac
wollondilly.nsw.gov.au
camden.nsw.gov.au

By post:

Campbelltown City Council

Threatened Species Competition,
PO Box 57, CAMPBELLTOWN NSW 2560

Camden Council

PO BOX 183
Camden NSW 2570

Wollondilly Council

PO Box 21
Picton NSW 2571

WASTE TO ART

Waste and plastic pollution has an enormous impact on the local and global environment.

The Waste to Art category is a category with the aim of getting students to consider how we might be contributing to the problem, and what we can do to move to a more sustainable future.

The Waste to Art project presents a reminder to practice the '5 Rs' of waste minimisation, Refuse, Reduce, Repair, Reuse and Recycle



SOME OF THE ARTWORKS FROM 2022



5 years



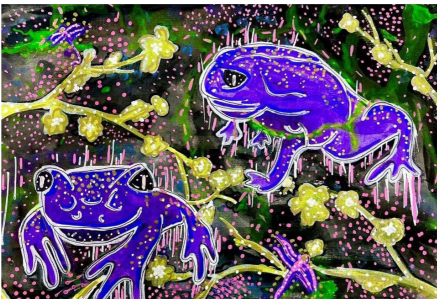
6 years



7 years



8 years



11 years



11 years

PRIZES FOR WINNING SCHOOL

Artwork

The school who has the highest percentage of students entered into the competition will win the TSAC School Prize Package. The school prize package is designed to allow schools to continue with biodiversity education following the conclusion of the competition.

Creative writing

There will be 1st, 2nd and 3rd place winners in the creative writing category. The three winners will receive an Eco Pack.

As well as this, their story will be published in the Threatened Species Art and Writing Competition Storybook.



AWARD CEREMONY

The competition will once again have an awards ceremony to celebrate winning individuals, placeholders and winning schools. Fittingly, the awards ceremony will take place on **Thursday 7 September**, and be hosted by the Australian PlantBank at the Australian Botanic Garden Mount Annan.

The PlantBank is a science and conservation facility, boasting one of the most diverse places on the planet, “the seed vault”, which holds seed collections from many of Australia’s 25,000 plant species, including 25% of NSW’s Threatened Species.

Refreshments will be served on arrival as you view the winning artworks on display. Winning schools, placeholders and individuals will be notified once the artworks have been judged and winning schools are welcome to bring a number of their students who participated in the competition.



CLASSROOM LEARNING EARLY

The cross-curricular nature of the TSAC allows for many different educational activities that can link into HSIE, Science and Visual Arts. See Extension Activities for practical educational examples.

Curriculum outcome links

Stage 1

Geography	GE1-1	GE1-2		
Science	ST1-2VA	ST1-9ES	ST1-11LW	ST1-14BE
Visual Arts	VAS 1.1	VAS 1.2	VAS 1.4	

Stage 2

Geography	GE2-1	GE2-2	GE2-3	
Science	ST2-2VA	ST2-8ES	ST2-11LW	
Visual Arts	VAS 2.1	VAS 2.4		

Stage 3

Geography	GE3-1	GE3-2	GE3-3		
Science	ST3-2VA	ST3-10LW	ST3-11LW		
Visual Arts	VAS 3.1	VAS 3.2	VAS 3.3	VAS 3.4	
English	EN3-1A	EN3.2A	EN3-4A	EN3-7C	EN3-8D

ARTWORK INSPIRATION

Be creative with art mediums and styles! There are many different mediums you can use to create your artwork!

Here are some options:

- chalk
- charcoal (soft or hard)
- coloured pencil
- crayon
- watercolour
- use your hand as a paint brush
- sand
- dirt
- sticks and stones
- bark



EXTENSION ACTIVITIES

The following are a list of activities that can be done in and outside the classroom prior to, during, or as extension activities for the TSAC:

- **Museum exhibition**

Imagine your artwork is going to be displayed as part of a museum exhibition.

Create some signs and additional artefacts that will teach others about the threatened species.

You might like to include information such as its scientific name, distribution, life cycle, interesting features and common threats.

- **Nature Rubbings**

Walk around outdoors to collect various textured objects. These could include leaves, tree bark, rocks etc. To make a rubbing, place a piece of paper on top of the object. Rub the paper gently with crayons until textures appear. The object and its texture will be 'imprinted' on the paper. You might like to use the rubbings or collage of rubbings in your competition artwork.

- **Native Plant Seed Bank**

Visit the ABC Splash website and watch the video clip about the native plant seed bank (splash.abc.net.au). Research a local threatened plant species and find out where it is found, threats it faces and what is being done to conserve it.

- **Nature Charades**

What is it like to be a tree? How does a baby animal feel? Get an understanding of different parts of the environment by pretending that you are those parts. Natural objects: a plant or rock. Animal: Baby bird, flying fox, squirrel glider. Present event: wind blowing through the trees, land clearing.

- **Make a difference**

Research some environmental groups that help protect and conserve Australian biodiversity. Locate a local group and learn how they are helping protect threatened species. Groups might include Bushcare, Macarthur National Parks Association or the Macarthur Centre for Sustainable Living. From this, you could start your own environmental group.

- **Native Garden**

Design a native garden for home or school. Identify some local plant species that could be planted to attract wildlife. Did you know that Council supplies each school with 50 native tubestock species as part of National Tree Day, which will be held occurring this year on Sunday 31 July. (For schools the date is Friday 29 July)

- **Weed Warriors**

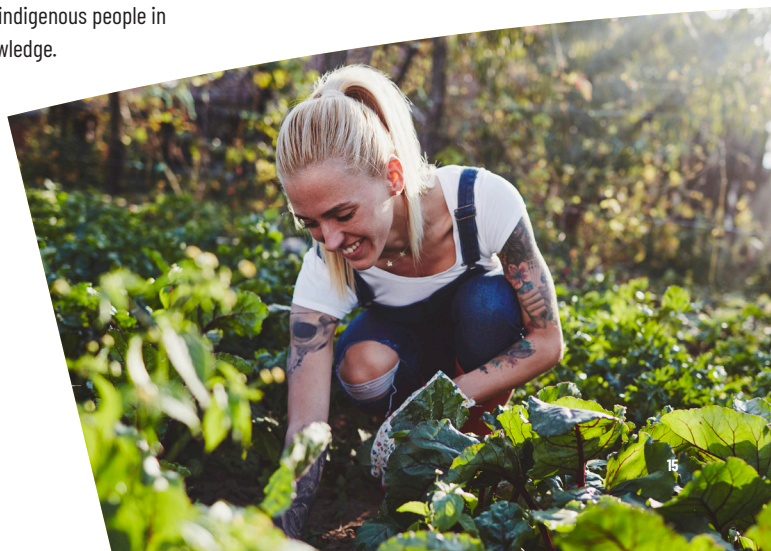
Investigate a local invasive species that threatens native habitat. Create a poster to educate others about the problems caused by this weed and alternatives that can be planted in the garden.

- **Aboriginal Significance**

Research local plant species and identify a plant that is culturally significant to local Aboriginal people. You may find that there are plants in your school grounds that have cultural significance. Draw a detailed diagram of the plant and identify its parts and how they are used.

To have help with this, you can contact the Tharawal Aboriginal Land Council Tharawal (*LALC*). The LALC work with the Campbelltown, Wollondilly, Camden and Liverpool communities, empowering both indigenous and non-indigenous people in traditional ecological knowledge.

If you like getting outdoors and learning about our native plants and animals, and being in a team of people that helps to protect these species and improve their habitat, contact your Council's Environment team to see how you can get involved!



HOW CAN YOUR SCHOOL BECOME A HAVEN FOR NATIVE FLORA AND FAUNA?

There are many ways in which your school can become a haven for native flora and fauna.

- **Design a native garden for home or school**
Identify some local plant species that could be planted to attract wildlife. Did you know that your Council supplies each school with free native plant species as part of National Tree Day. Contact your local Council for more information about how to receive the plants.
- **Leave dead wood and rocks in the bush**
Although dead wood and rocks might not seem like much to us, plants and animals use these things as shelter and a source of food. This is why it is important that we leave these things where they lie.
- **Join a community group, such as a local Bushcare group**
If you like to get outdoors and spend time in the bush or other natural environments you can contact Council to see what fun activities you could get involved in with your family and friends on the weekend.
- **Set up your own eco-warrior team at school**
Together, you and your team could become the eco-champions of your school. Through posters, group discussions and assembly announcements you can ensure that the whole school is aware of the threatened plants and animals that may call your school home.

- **Remove known weed species from your garden and replace them with local native plants**

Sometimes our gardens are full of plants that are not native to our country, and they prevent our native plants from growing. We call these plants weeds. By removing weeds and planting native plants you are helping not only the plants but the native animals that need these plants to survive.

Through the TSAC, you will learn about many native plants that you can plant in your garden!

- **Visit a local national park or nature reserve**
Getting outdoors and visiting our national parks and reserves shows the support and interest in these natural areas, meaning they become very important places to protect for the community.

The Macarthur region has some beautiful natural areas to visit. To find out all about the areas you can visit each Council's website or contact them and they can give you all the information you need to get out there and enjoy the natural environment.



A LOCAL TREASURE!

Cumberland Plain Woodland - A Critically Endangered Ecological Community

Prior to European settlement, much of Western Sydney, including the Macarthur region, would have been draped in the unique Cumberland Plain Woodland Community, consisting of a mix of large gum trees, patchy shrubs and grasses. This rare woodland community provides habitat to a wide range of native plants and animals, forming vital areas of habitat within a wildlife corridor that has the potential to connect the bushland between the Georges and Nepean River.

Due to land clearing for farming and houses it is estimated that only around 6% of the original bushland remains in small patches scattered across the Cumberland Plain. Along with clearing, weeds are one of the biggest threats facing these patches of bush.

The Cumberland Plain Woodland Community provides habitat for a range of threatened plant and animal species including:

- Koala
- Grey-headed Flying Fox
- Cumberland Plain Land Snail
- Diamond Firetail Finch
- Spiked Rice flower

Many parks and reserves in the Macarthur region contain Cumberland Plain Woodland communities. You may like to visit one of these areas:

- Ingleburn Reserve, Ingleburn
- Noorumba Reserve, Rosemeadow
- Australian Botanic Garden Mt Annan

Did you know?

It's not only dogs that can play dead. Many of the ground species of the Cumberland Plain Woodland have thick rootstocks, in the form of taproot systems, underground tubers and the like.

This allows the plant to survive even if it looks dead after severe weather conditions such as drought or fire.

BECOME AN ECO-SCHOOL!

Eco-Schools is an international program of the Foundation for Environmental Education (FEE), and aims to empower students to be the change our sustainable world needs by engaging them in fun, action-orientated learning. Australia is the 55th country to launch this program and it gives Australian schools the opportunity to develop and improve the environmental management of the school, underpinned by curriculum development and community engagement in environment and sustainability themes.

Sustainability and Environmental Educators Network SEED

Are you passionate about sustainability and the environment in your school?

Interested in receiving more information about the environmental education workshops and programs we offer?

Please do not hesitate to register your interest in the local Sustainability and Environmental Educators Networks!

For Campbelltown City Council: open.space@campbelltown.nsw.gov.au

For Camden Council: sustainability@camden.nsw.gov.au



Eco-schools Australia schools will have access to the following...

1. Gain full access to Eco-Schools Australia website
2. Eco-Schools 7-Step framework guidelines and resource templates
3. Practical case studies written by Australian Eco-Schools – the who, what, how, where and when of being an Eco-School
4. Action project and lesson ideas, organised by sustainability themes
5. Eco-Schools Awards applications and the ability to apply for Eco-Schools Awards
6. Teaching resource sharing forum
7. Eco-Schools Profile Page to store Eco-Schools data and awards submissions
8. School Search – connect with other Eco-Schools in Australia and view their environmental education initiatives.

To register to become an Eco-School, there is a \$110 (*incl. GST*) annual registration fee. This fee gives you access to everything listed above.

The Macarthur region has been the first in Australia to take on board the Eco-School program. It is now in over 100 schools throughout Australia. To know more about the Eco-School program visit eco-schools.org.au

BOTANIC GARDENS SCHOOL EXCURSION FOR THREATENED SPECIES ART & WRITING COMPETITION

Age group: 6 – 12 years (Primary Stage 1 to Stage 3)

Duration: 2 hours

Location: PlantBank, Australian Botanic Garden Mount Annan

Cost: \$14 per student (minimum charges apply)

Australia is home to many plants and animals that cannot be found anywhere else on earth. But – many of them are threatened with extinction!

Many of our unique and irreplaceable native species only exist in minimal numbers and might vanish within the next decades. Nationally there are almost 2000 Australian plant and animal species that are listed as ‘threatened’. 1000 species are at risk in NSW alone.

The 7th September is Threatened Species Day.

In our special workshop, designed specifically for the Threatened Species Art and Writing Competition, we find out why so many species are threatened and what we can do to prevent it. During the two-hour program, you will learn which plants in our area are threatened and the reasons why.

Together with one of our educators, you will walk through the endangered Cumberland Plain Woodland and look for them.

To prepare you for the Threatened Species Art and Writing Competition, we will cover the basics of botanic illustration and draw plants using real specimens.



References

Australian Museum – Biodiversity information and the work of the museum
australianmuseum.net.au/biodiversity

American Museum of Natural History – Interactive games, video and resources for kids about biodiversity
amnh.org/explore/ology/biodiversity

Arkive – A gallery of images and information on threatened species. A number of lesson plans and student activities are also available
arkive.org

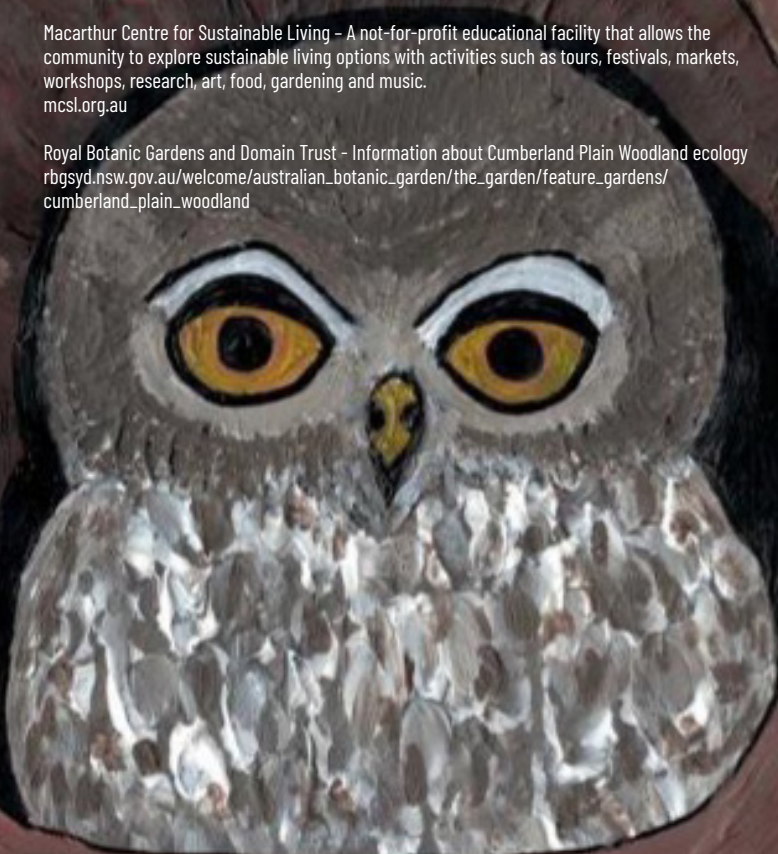
Backyard Buddies – Foundation of National Parks & Wildlife program to promote the protection of native animals in suburban areas
backyardbuddies.net.au/

Birds in Backyards – tips and resources for encouraging native bird habitats in suburban areas
birdsinyourbackyards.net/

Living Macarthur Sustainable Living Guide – Articles on a range of sustainable actions including native gardens and promoting biodiversity
livingmacarthur.com.au/

Macarthur Centre for Sustainable Living – A not-for-profit educational facility that allows the community to explore sustainable living options with activities such as tours, festivals, markets, workshops, research, art, food, gardening and music.
mcsf.org.au

Royal Botanic Gardens and Domain Trust - Information about Cumberland Plain Woodland ecology
rbgsyd.nsw.gov.au/welcome/australian_botanic_garden/the_garden/feature_gardens/cumberland_plain_woodland





Campbelltown City Council
P 4645 4000
W campbelltown.nsw.gov.au

Camden Council
P 4654 7777
W camden.nsw.gov.au

Wollondilly Shire Council
P 4677 1122
W wollondilly.nsw.gov.au