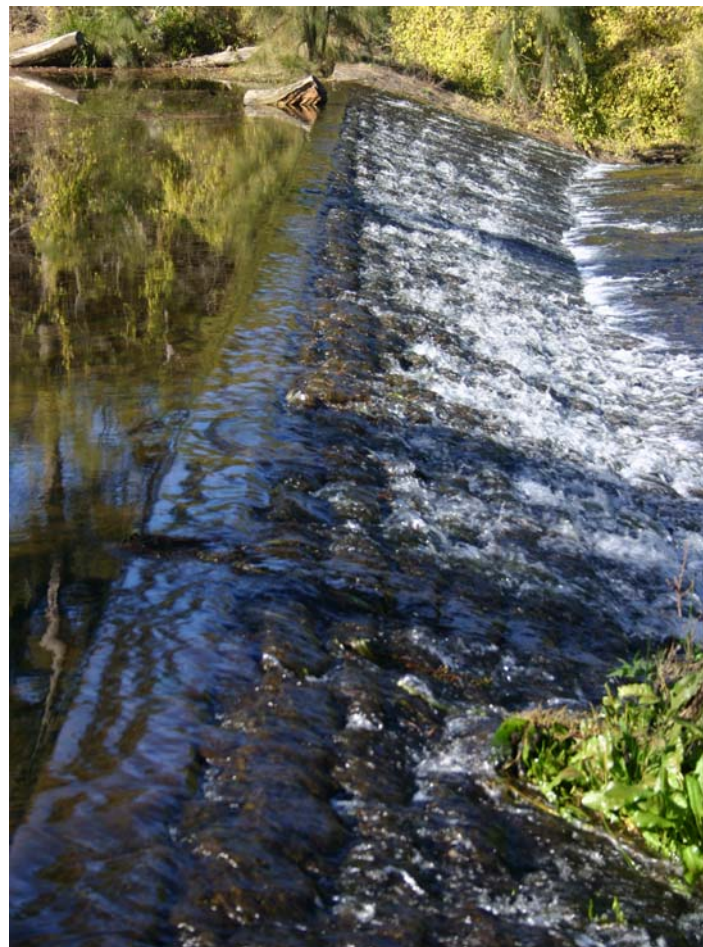


MENANGLE WEIR

Across the Nepean River, Menangle Park
One of a series of weirs on the Nepean River



HISTORY AND DESCRIPTION:

Menangle weir and others (including Bergins Weir) were built to maintain the riparian rights of landowners along the Nepean river after the completion of the Upper Nepean Scheme in 1886.

CONDITION AND USE:

Largely undisturbed due to its remote location – still used as a weir. Access by walking track from Menangle River Reserve.

HERITAGE SIGNIFICANCE:

- Not so historically significant but still serving its original purpose

HERITAGE LISTING:

LOCAL: LEP 193

STATE: *Macarthur Regional Heritage Study: Map 8, No. 37*
National Trust (NSW): Classified

FEDERAL: *Heritage Commission (National Estate): Registered*