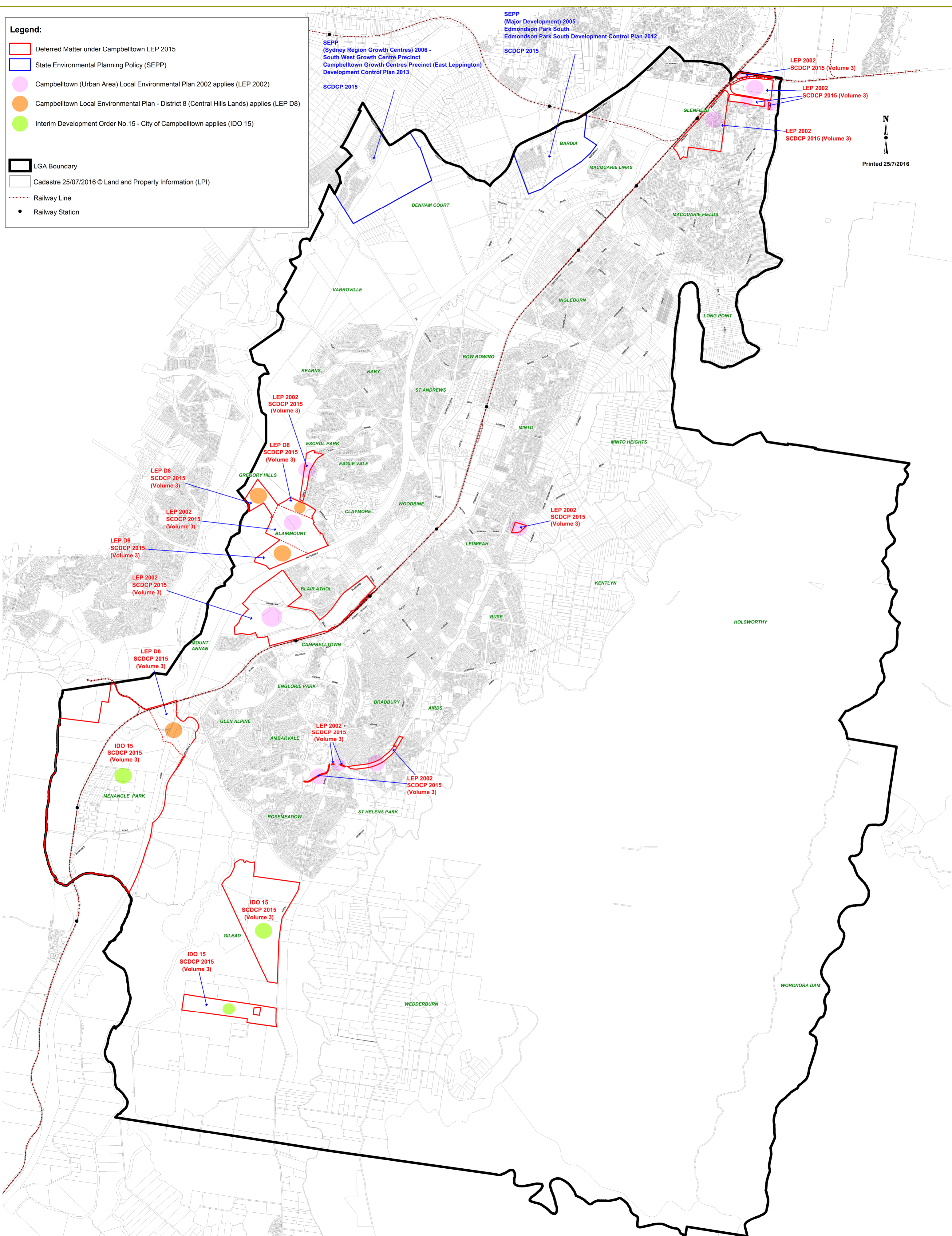


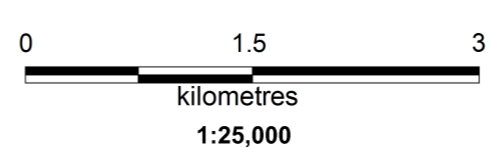
Legend:

- Deferred Matter under Campbelltown LEP 2015
- State Environmental Planning Policy (SEPP)
- Campbelltown (Urban Area) Local Environmental Plan 2002 applies (LEP 2002)
- Campbelltown Local Environmental Plan - District 8 (Central Hills Lands) applies (LEP D8)
- Interim Development Order No.15 - City of Campbelltown applies (IDO 15)

- LGA Boundary
- Cadastre 25/07/2016 © Land and Property Information (LPI)
- Railway Line
- Railway Station



N
↑
Printed 25/7/2016



Disclaimer:
While the map has been created with all due care, Council does not warrant or represent that the map is free from errors or omission, or that it is exhaustive. The map is provided for clarification purposes and on the basis that you are responsible for assessing the relevance of its content. Council will not accept liability for any loss, damage, cost or expense that you may incur as a result of the use of or reliance upon this map.