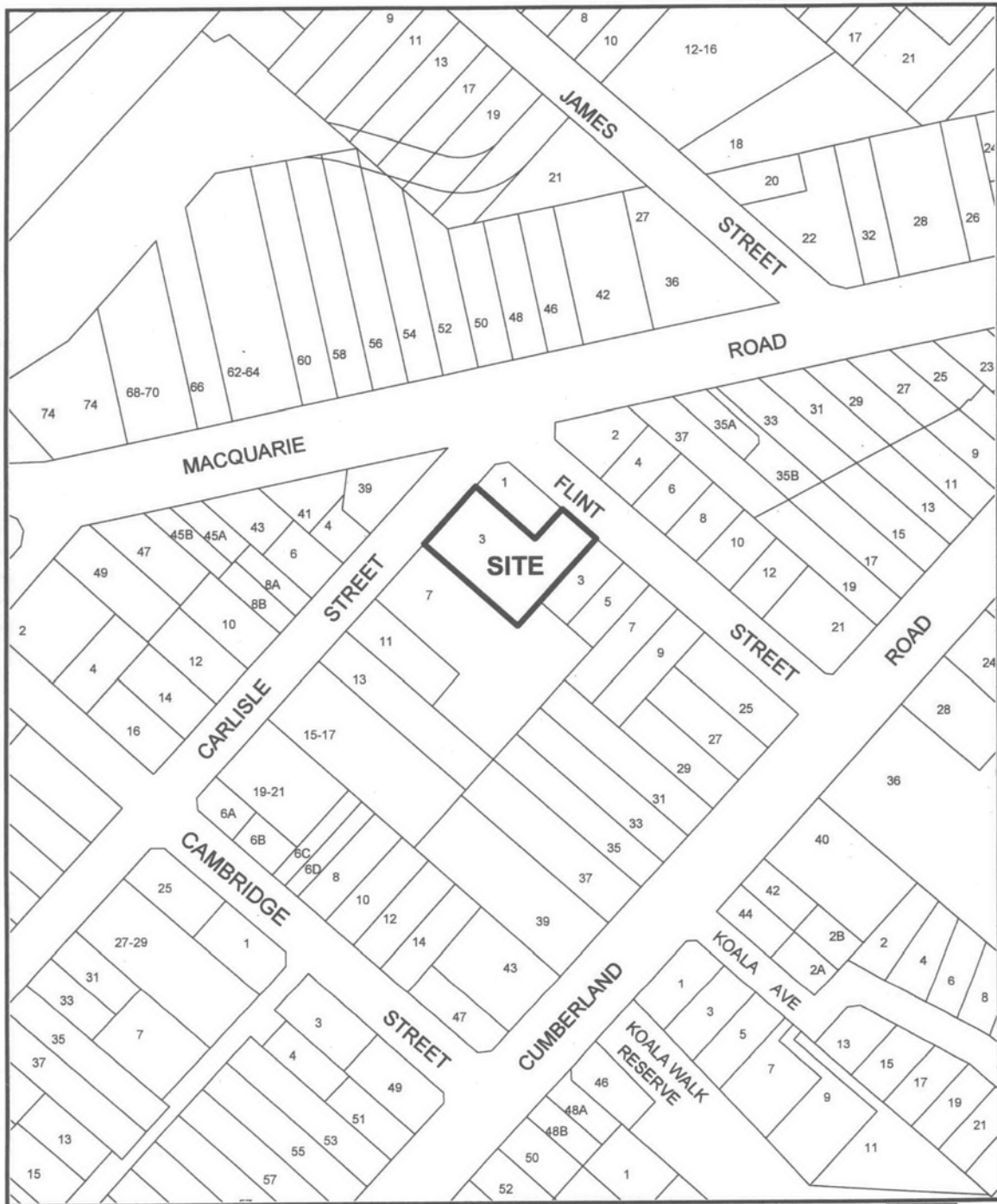


ATTACHMENT 2



LOCALITY PLAN

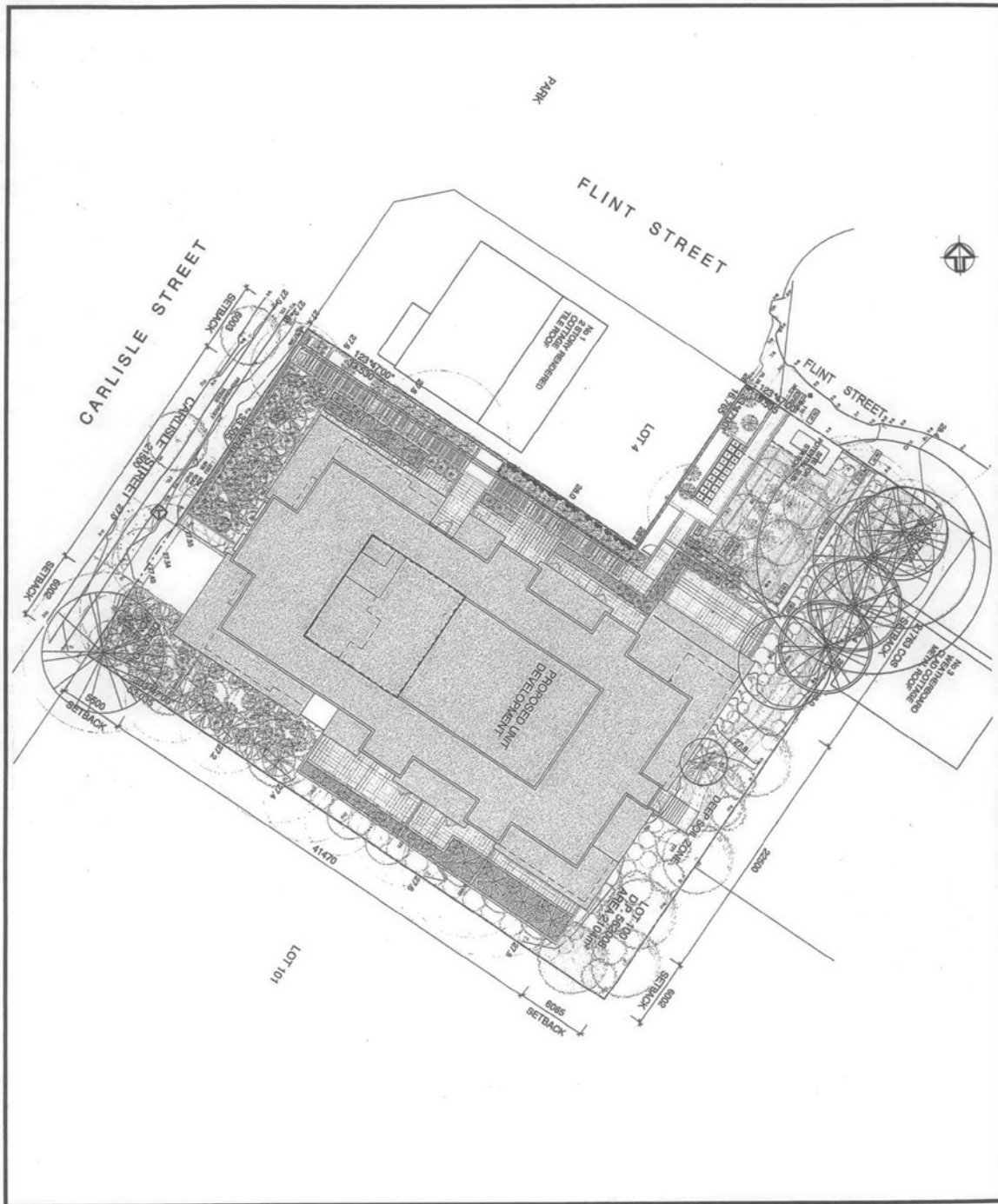


SUBJECT:

CONSTRUCTION OF RESIDENTIAL FLAT BUILDING.

LOT 100 DP 562008 - No. 3 CARLISLE STREET, INGLEBURN.

ATTACHMENT 3



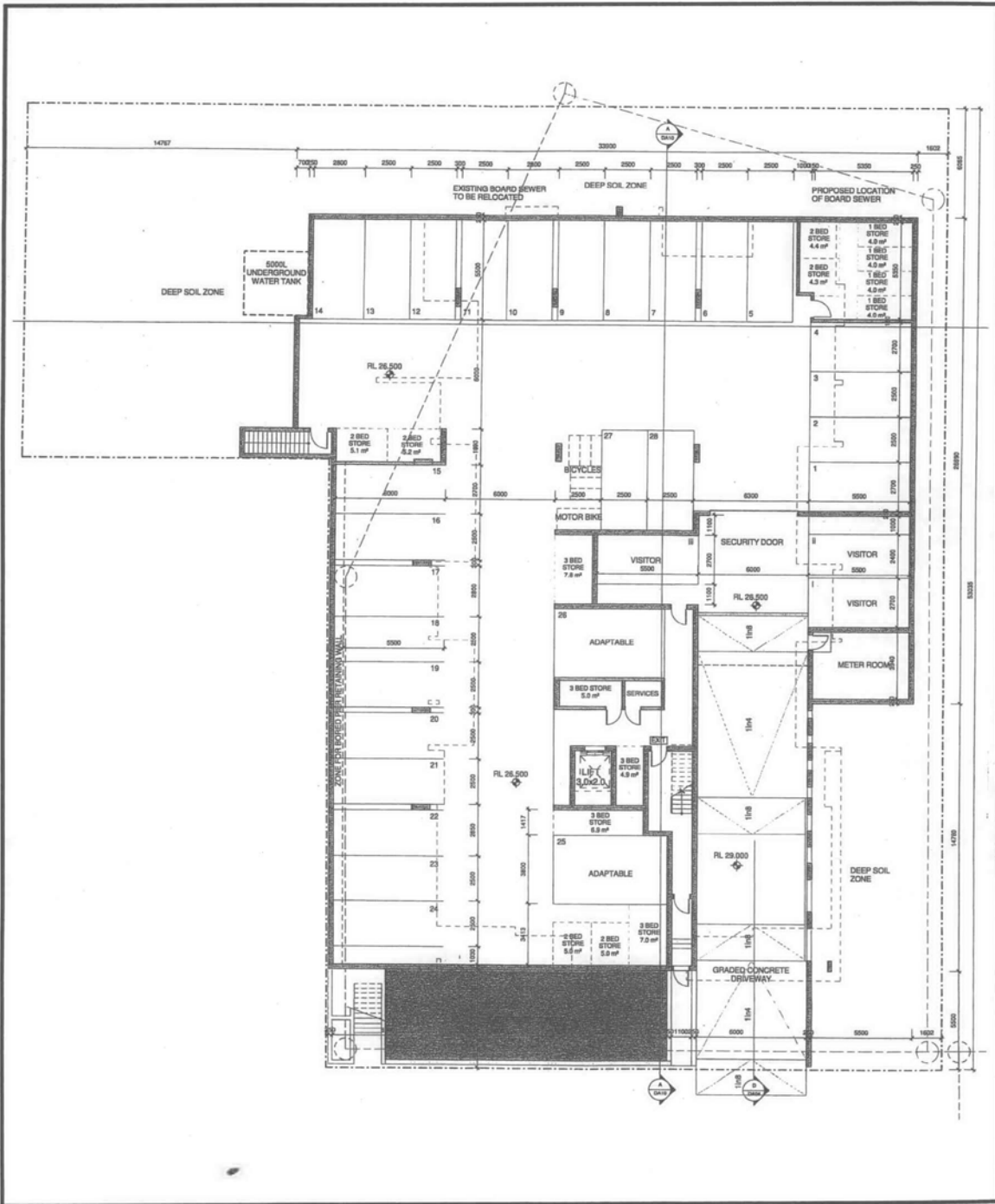
SITE PLAN

SUBJECT:

CONSTRUCTION OF RESIDENTIAL FLAT BUILDING.

LOT 100 DP 562008 - No. 3 CARLISLE STREET, INGLEBURN.

ATTACHMENT 4



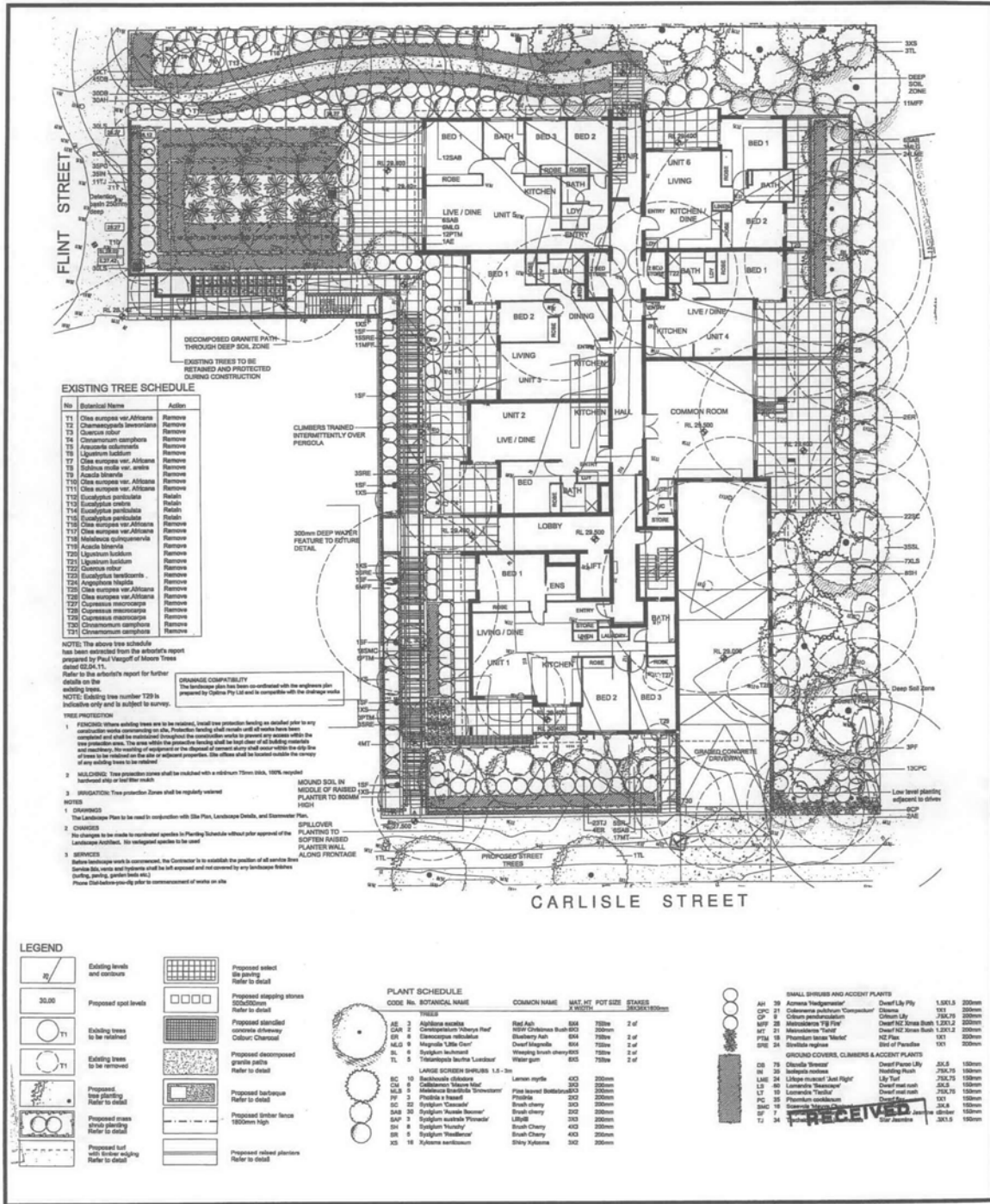
BASEMENT FLOOR PLAN

SUBJECT:

CONSTRUCTION OF RESIDENTIAL FLAT BUILDING.

LOT 100 DP 562008 - No. 3 CARLISLE STREET, INGLEBURN.

ATTACHMENT 5



EXISTING TREE SCHEDULE

No.	Botanical Name	Action
T1	Clusia sarracina var. affinis	Remove
T2	Chamaecyparis lasiocarpa	Remove
T3	Quercus robur	Remove
T4	Chamaecyparis lasiocarpa	Remove
T5	Liquidambar styraciflua	Remove
T6	Clusia sarracina var. affinis	Remove
T7	Sabina arbuscula var. arbuscula	Remove
T8	Acacia saligna	Remove
T9	Clusia sarracina var. affinis	Remove
T10	Clusia sarracina var. affinis	Remove
T11	Eucalyptus penicillata	Retain
T12	Eucalyptus penicillata	Retain
T13	Eucalyptus penicillata	Retain
T14	Eucalyptus penicillata	Retain
T15	Clusia sarracina var. affinis	Remove
T16	Clusia sarracina var. affinis	Remove
T17	Clusia sarracina var. affinis	Remove
T18	Acacia saligna	Remove
T19	Liquidambar styraciflua	Remove
T20	Liquidambar styraciflua	Remove
T21	Clusia sarracina var. affinis	Remove
T22	Clusia sarracina var. affinis	Remove
T23	Clusia sarracina var. affinis	Remove
T24	Clusia sarracina var. affinis	Remove
T25	Clusia sarracina var. affinis	Remove
T26	Clusia sarracina var. affinis	Remove
T27	Clusia sarracina var. affinis	Remove
T28	Clusia sarracina var. affinis	Remove
T29	Clusia sarracina var. affinis	Remove
T30	Clusia sarracina var. affinis	Remove
T31	Clusia sarracina var. affinis	Remove

NOTE: The above tree schedule has been extracted from the arborist's report prepared by Paul Vaegert of Moore Trees dated 22/04/11. Refer to the arborist's report for further details on the existing trees.

NOTE: Existing tree number T29 is indicated only and is not to be sprayed.

- #### TREE PROTECTION
- FENCING:** Where existing trees are to be retained, local tree protection fencing as detailed prior to any construction works commencing on site. Protection fencing shall remain until all works have been completed and all soil has been replaced to the original ground level. The area within the protective fencing shall be kept clear of all building materials and equipment. The watering of vegetation on the disposal of corner curbs shall occur while the edge line of works is in operation on the site or adjacent properties. Site sheds shall be located outside the canopy of any existing trees to be retained.
 - MOUNDING:** Tree protection zones shall be mounded with a minimum 150mm (6in) 100% recycled barkwood chip or leaf litter mulch.
 - SPRINKLING:** Tree protection zones shall be regularly watered.
- NOTES:
- DRAINAGE:** The landscape plan to be read in conjunction with Site Plan, Landscape Details, and Stormwater Plan.
 - CHANGES:** No changes to be made to residential spaces to be finished without prior approval of the Landscape Architect. No residential species to be used.
 - SERVICES:** Before landscape work is commenced, the Contractor is to establish the position of all services (pipes, cabling, garden beds etc.). Please liaise with utility providers prior to commencement of works on site.

LEGEND

	Existing levels and contours		Proposed select site paving
	Proposed spot levels		Proposed retaining screen 500x500mm
	Existing trees to be retained		Proposed standard concrete driveway
	Existing trees to be removed		Proposed decomposed granite paths
	Proposed tree planting		Proposed deck area
	Proposed trees to be planted		Proposed timber fence
	Proposed trees to be planted		Proposed 1800mm high
	Proposed turf with border edging		Proposed raised planter

PLANT SCHEDULE

CODE No.	BOTANICAL NAME	COMMON NAME	MAT. HT.	POT SIZE	STAKES
AS 3	Azalea indica	Red Ash	850	750mm	2 of
CAR 2	Conocarpus tibeticus	Red Christmas Bush	850	750mm	2 of
DI 8	Dioscorea bulbifera	Shocking Ash	850	750mm	2 of
MCS 9	Megnolia 'Little Gem'	Over Magnolia	850	750mm	2 of
RL 4	Spigelia buckleyi	Wreathing bush cherry	850	750mm	2 of
TL 5	Tristania laurifolia	Water gum	850	750mm	2 of

CODE No.	BOTANICAL NAME	COMMON NAME	MAT. HT.	POT SIZE	STAKES
BC 10	Banksia obtusifolia	Lemon myrtle	400	300mm	
CU 8	Callistemon viburnifolius	White heath	300	200mm	
ML 8	Mitrasacme banksiana	White banksia	300	200mm	
FR 3	Fuchsia 'Fasciata'	Fuchsia	300	200mm	
SC 12	Syringa 'Coma'	Bush cherry	300	200mm	
DAB 30	Dryopteris 'Aurea Banner'	Bush cherry	300	200mm	
SAP 3	Syringa 'Aurea Banner'	Lilac	300	200mm	
CH 8	Chamaecyparis 'Nurella'	Bush Cherry	400	300mm	
IR 5	Illicium verum	Bush Cherry	400	300mm	
XS 18	Xylocarpus parlatorei	Silky Xylocarpus	300	200mm	

SMALL SHRUBS AND ACCENT PLANTS

AH 19	Azalea 'Indigo Queen'	Over Lily Pilly	1,000.0	200mm
CPC 11	Conocarpus tibeticus	Christmas	1,000.0	200mm
CP 1	Callistemon viburnifolius	White heath	1,000.0	200mm
MSP 18	Mitrasacme banksiana	Over Red Xmas Bush	1,000.0	200mm
MT 11	Mitrasacme banksiana	Over Red Xmas Bush	1,000.0	200mm
PTM 18	Phoradendron 'Mistake'	Red Pine	1,000.0	200mm
SDE 24	Santalum album	Stick of Paradise	1,000.0	200mm

GROUND COVERS, CLIMBERS & ACCENT PLANTS

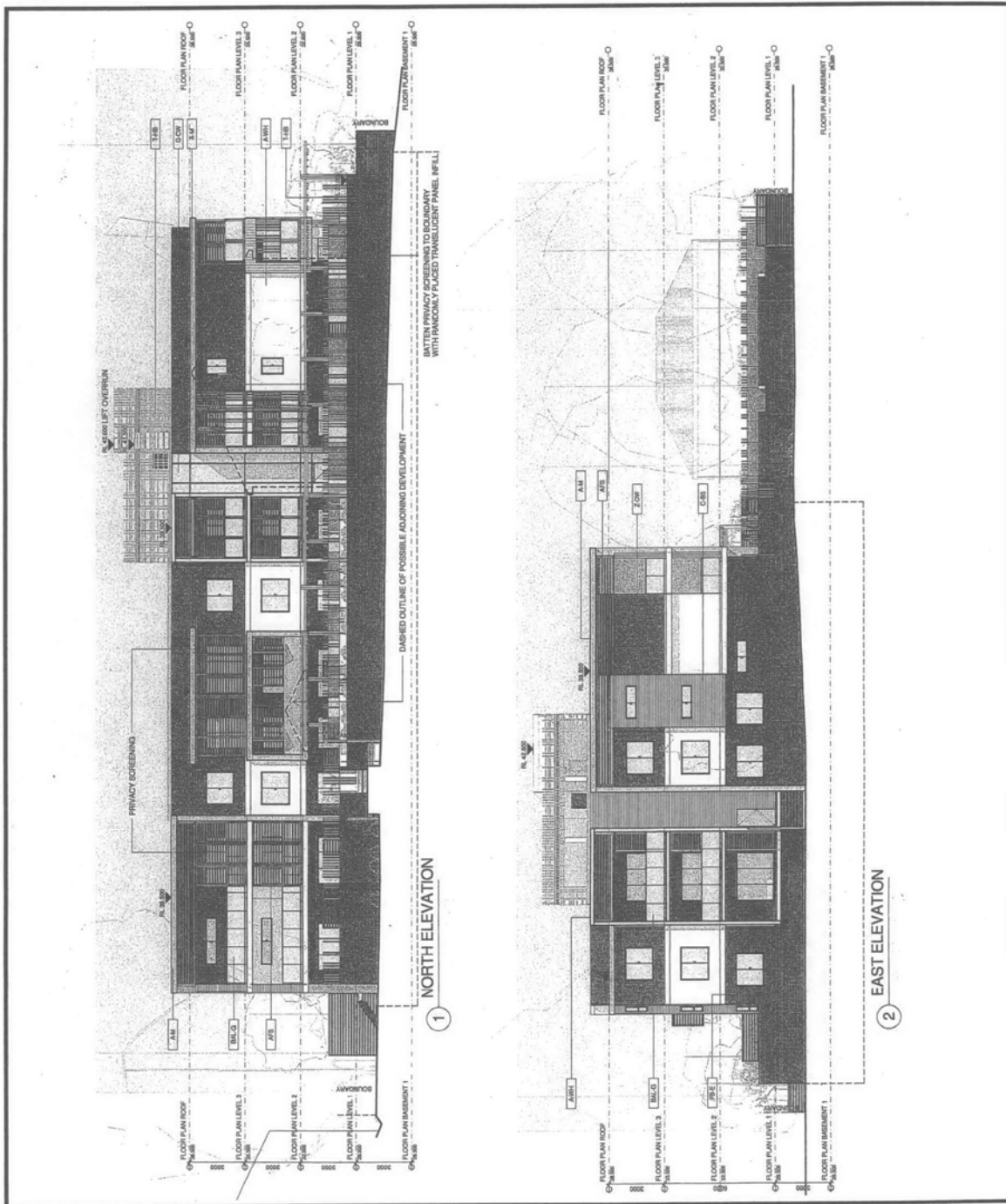
CS 18	Callistemon viburnifolius	Over Purple Lily	300.0	150mm
IR 30	Illicium verum	Over Red Pine	300.0	150mm
LSE 14	Lonicera 'Aurea Banner'	Lily Turf	250.0	150mm
LS 10	Lonicera 'Aurea Banner'	Over Red Pine	300.0	150mm
LT 10	Lonicera 'Aurea Banner'	Over Red Pine	300.0	150mm
PC 10	Phoradendron 'Mistake'	Over Red Pine	300.0	150mm
SAC 19	Santalum album	Over Red Pine	300.0	150mm
SP 7	Syringa 'Aurea Banner'	Over Red Pine	300.0	150mm
TL 14	Tristania laurifolia	Over Red Pine	300.0	150mm

LANDSCAPE PLAN

SUBJECT: CONSTRUCTION OF RESIDENTIAL FLAT BUILDING.

LOT 100 DP 562008 - No. 3 CARLISLE STREET, INGLEBURN.

ATTACHMENT 6

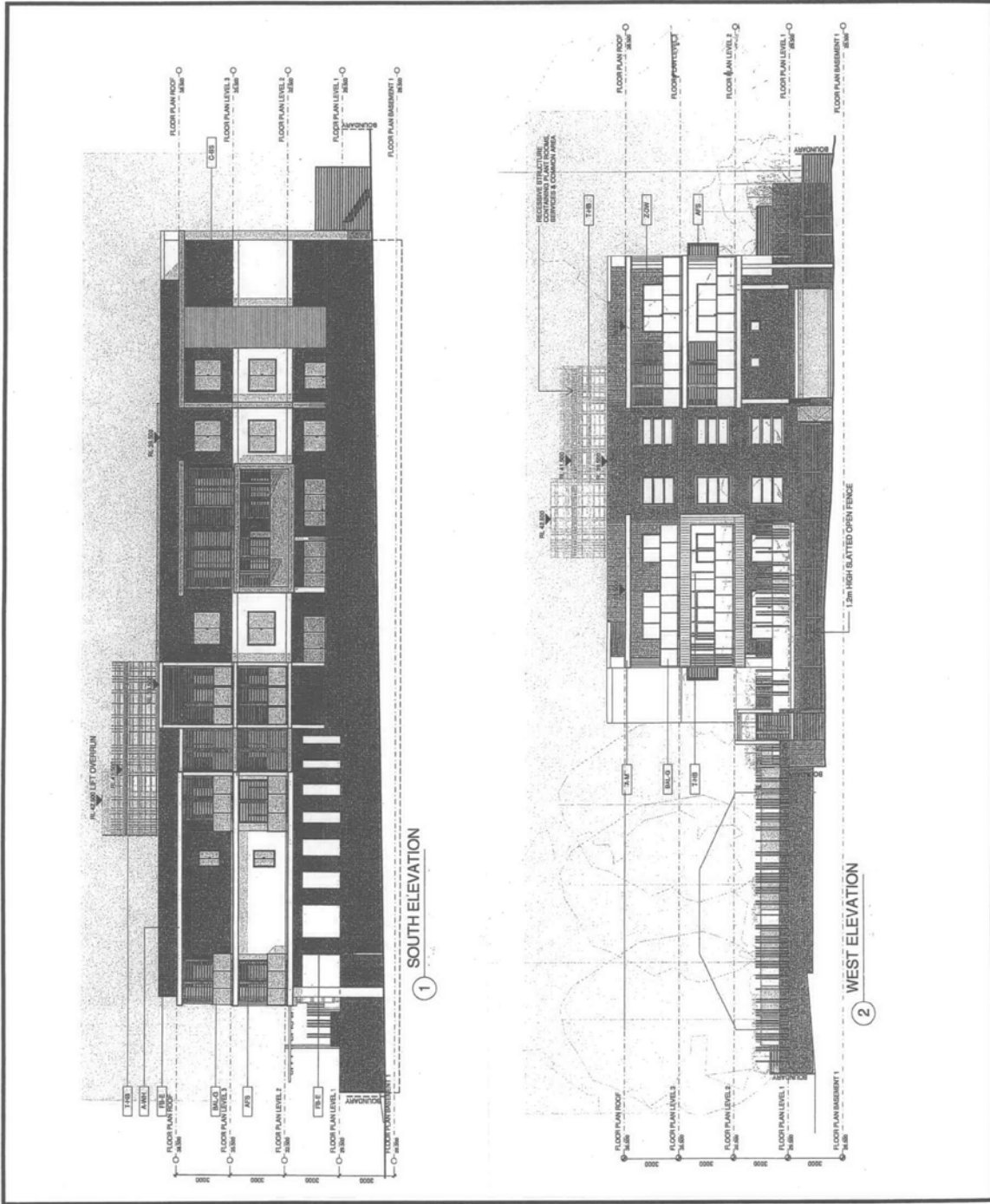


ELEVATIONS

SUBJECT:

CONSTRUCTION OF RESIDENTIAL FLAT BUILDING.

LOT 100 DP 562008 - No. 3 CARLISLE STREET, INGLEBURN.



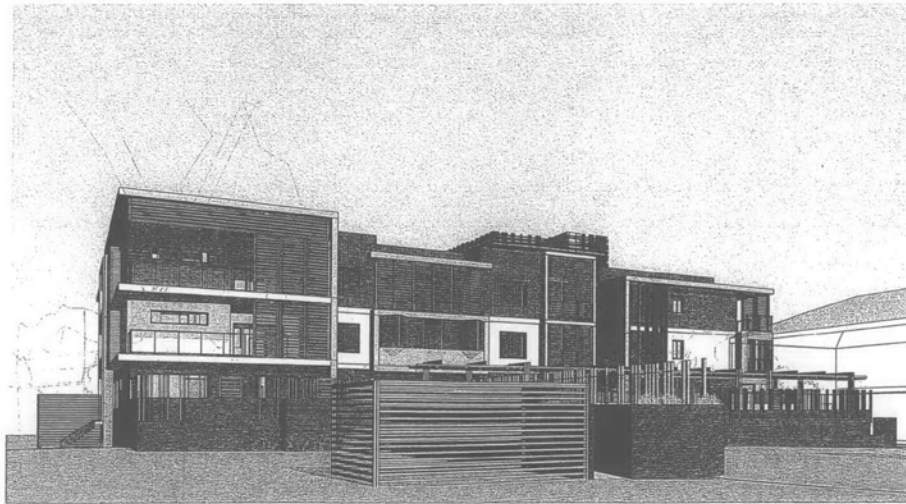
ELEVATIONS

SUBJECT:

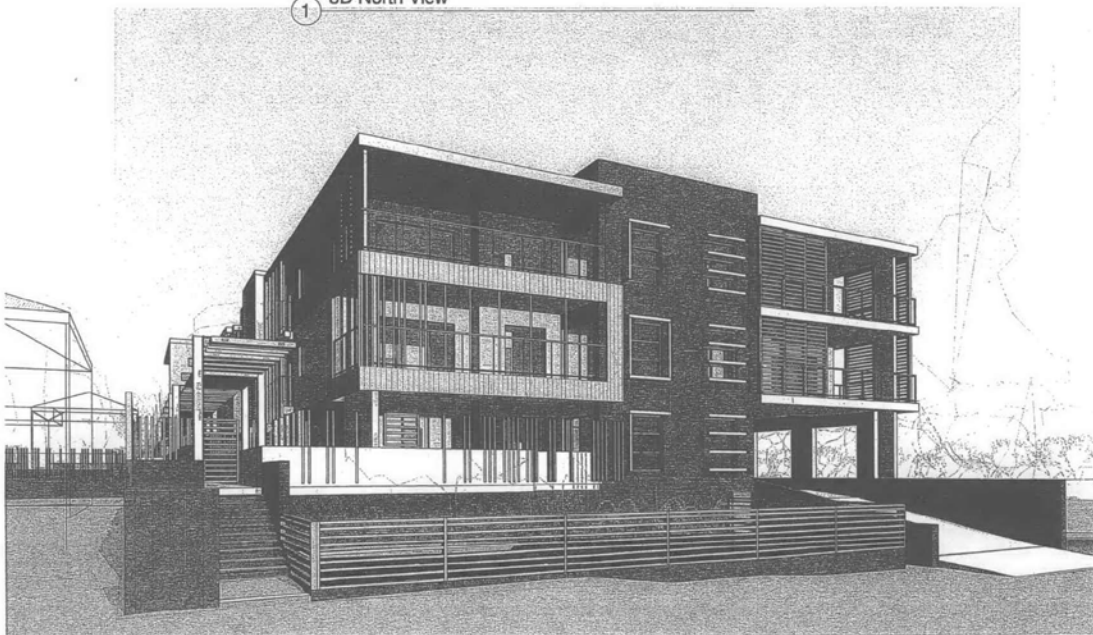
CONSTRUCTION OF RESIDENTIAL FLAT BUILDING.

LOT 100 DP 562008 - No. 3 CARLISLE STREET, INGLEBURN.

ATTACHMENT 7



① 3D North View



3D PERSPECTIVE

SUBJECT:

CONSTRUCTION OF RESIDENTIAL FLAT BUILDING.

LOT 100 DP 562008 - No. 3 CARLISLE STREET, INGLEBURN.