

The cover features a collage of images: a close-up of yellow and orange flowers in the top left; a two-story yellow building with a balcony at night in the middle; a rocky riverbank with a stream in the lower middle; and a large crowd of people at a community event in the bottom left. A green and blue curved graphic element separates the images from the text on the right.

Campbelltown City Council 2005 - 2006 State of the Environment Report

This State of the Environment (SoE) Report has been prepared by Council to report on the condition of the key areas of Land, Water, Community and Heritage within the Campbelltown Local Government Area (LGA). The report provides a snapshot of the current state of these key areas, and the issues Council and the community face in making Campbelltown a better place to live, now and into the future. The SoE also outlines Council's achievements in responding to these issues.

The State of the Environment Report is an important document that Council is required to develop each financial year, under the *Local Government Act 1993*. State of the Environment reporting is utilised by Council to inform its actions and provide strategic direction for its activities.

The report is utilised by Council to assist it in following the principles of Ecological Sustainable Development (ESD). ESD principles place equal value on our society, the economy, the environment, and our heritage. By following these principles, Council will improve the social, economic, environmental and heritage outcomes of its activities.

The development of the State of the Environment report identifies the main threats to these key areas. Once these threats have been identified, Council can develop actions to address them, which are then incorporated into Council's management plan. This ensures the principles of ESD are fully and effectively integrated into Council's policy and operating systems.

The SoE report is divided into sections of: Our Land, Our Water, Our Community and Our Heritage. Within these sections, the threats to these key areas have been identified, and Council's response to them is briefly outlined.



OUR LAND

During the reporting period, impacts associated with ongoing development and population expansion have continued to place significant pressure on the unique biodiversity and urban/rural landscape characteristics of the Campbelltown area.

TERRESTRIAL BIODIVERSITY MAJOR ISSUES

The Campbelltown area is fortunate to feature large preserved areas of bushland, which boast high levels of biodiversity due to the range of underlying soil types and variations in slope. The largest areas of bushland are located on the steeper slopes in the east of the LGA, however, there are also significant isolated remnants in the western and central sections of the LGA where a higher level of urban development has occurred.

The major threats to biodiversity in the Campbelltown area are weed invasion, inappropriate fire regimes, predation by feral animals, erosion, stormwater runoff, illegal dumping, misuse of bushland areas, habitat loss/fragmentation associated with development and insufficient baseline data relating to the state of biodiversity.

Council has continued to play a pivotal role in the development and implementation of strategies and on-ground works in association with the community and other key stakeholders. These aim to minimise the impact of identified threats on biodiversity within the Campbelltown LGA as outlined below.

ACHIEVEMENTS

- Survey work for Stage 2 of the Campbelltown Biodiversity Study has been completed. This identified three significant flora species and 14 significant fauna species within the three priority survey areas (Scenic Hills district, Georges River and associated corridors and The Southern Corridors around the vicinity of Gilead). This Stage of the study builds on the outcomes of Stage 1, which consolidated existing information relating to biodiversity within the Campbelltown LGA. A report on Stage 2 of the Biodiversity Study will be completed during the next reporting period.
- Council has secured grant funding from the State Government to complete the design and restoration of the walking track at the Basin Reserve, Kentlyn as part of the implementation of Council's Plan of Management for the Reserve. The design component of the

track restoration has been completed and involved a preliminary site assessment to determine any potential impacts of the track restoration on Aboriginal culturally significant sites within the Reserve. It is estimated that a detailed Aboriginal Heritage Management Plan for the Reserve will be completed by the end of 2006. This Plan will be utilised during the track restoration component of the project scheduled to commence in early 2007.

- Council has adopted the Plan of Management for Simmo's Beach Reserve, located at Macquarie Fields. Key features of the Plan include a track network developed in consultation with the community, enhancement of threatened species populations within the Reserve, and strategies to encourage responsible community use and enjoyment of the Reserve. A draft Plan of Management for Varoville Reserve was also commenced in the reporting period and is expected to be completed in the first half of 2007.
- The continuation of on-ground vegetation works at Noorumba Reserve (weed removal within the riparian corridor), Menangle Creek (riparian zone revegetation), Fisher's Ghost Reserve (target weeding of noxious weeds), and Menangle Park (implementation of a management plan to treat Serrated Tussock, involving spraying and direct application of native grass seed).
- Council applied for funds under the Sydney Metropolitan Catchment Management Authority Iconic Project Program. The first project involves the rehabilitation of the Redfern Creek riparian zone along Clifford and Treelands Walk, Ingleburn. The second project aims to begin a koala habitat restoration program within the Campbelltown LGA. Works will be undertaken at two priority sites at Spring Creek, St Helens Park and in the vicinity of Georges River Road and Botany Place, Kentlyn. The commencement of work on both these projects is pending the announcement of successful grant applications which will be announced during the next reporting period.

WASTE AND RECYCLING MAJOR ISSUES

Council's Waste Management Strategy includes two major objectives:

- To strive towards the lowest practical amount of waste generated per household; and
- To strive towards the highest practical ratios of recyclables to waste produced per household.



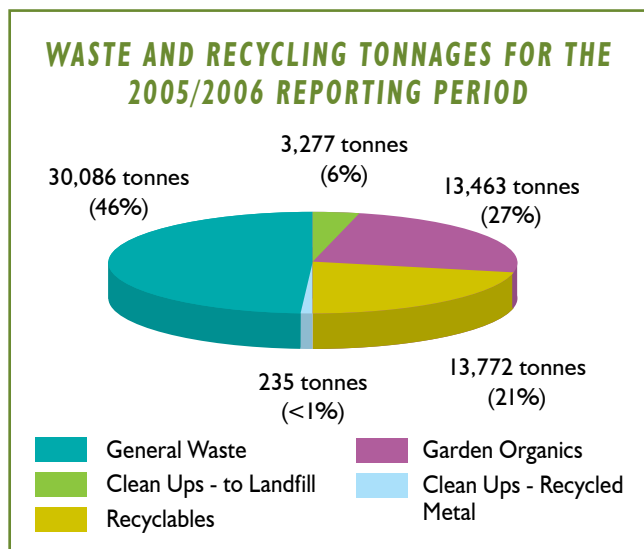
OUR LAND Continued

Council's key performance indicators in waste management are to minimise the volume of waste generated and maximise the recovery of recyclable materials, as well as to reduce the impacts associated with littering and illegal dumping.

To assist in meeting these objectives Council continues to offer a three-bin collection system, consisting of:

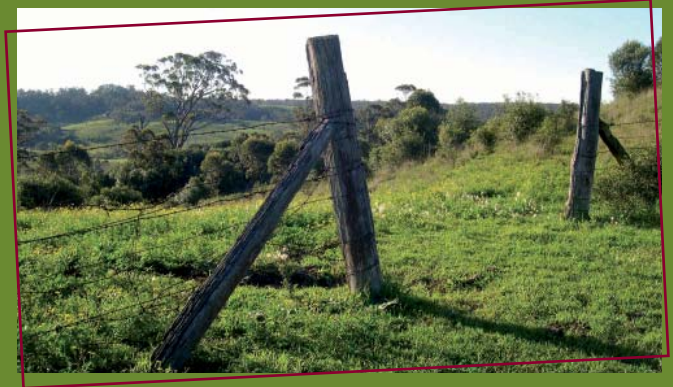
- a 140 litre garbage bin collected weekly;
- a 240 litre recycling bin collected fortnightly;
- a 240 litre garden organics bin collected fortnightly;
- and four kerbside clean ups per year.

The figure below shows the tonnages of material collected through each of the services during the 2005/2006 reporting period.



ACHIEVEMENTS

- Commencement of a new domestic waste, recycling and garden organics collection contract in April 2006. The contract will enhance Council's collection service for all three streams of Campbelltown's waste and recycling for a period of seven years.
- Campbelltown City Council and three neighbouring Councils resolved to enter into a 15 year contract with WSN Environmental Solutions to process domestic waste, recyclables and garden organics. The joint contract with Camden, Wollondilly and Wingecarribee Councils has attracted the interest of the waste industry and Local Government across Australia and internationally. This project will place the four participating Councils and WSN as leaders in the management of domestic waste, with the construction and operation of a \$50 million facility that promises to be an environmental and technological showcase.



- Participation in annual community waste management and litter prevention events. Approximately 30 tonnes of waste were removed from schools, parks, roadsides, creeks and bushland around the Campbelltown LGA during Clean Up Australia Day 2006. 35,110kg of chemical waste products were collected via the Chemical Clutter Clean Out in August 2005.
- Continuation of providing residents with a free, safe disposal service of needles and syringes, a program that is supported by local pharmacies.
- Implementation of public recycling trials at Council events including the Ingleburn Alive Festival and Riverfest 2006. A third trial will be held at the Festival of Fisher's Ghost in the 2006/2007 reporting period.
- Continuation of Council's City Cleansing Program. This program continues to effectively remove and control litter and rubbish from City centres and public land.
- Participation in the Sustainability Blitz Program. The Sustainability Blitz is a partnership between Camden, Campbelltown, Wollondilly and Liverpool Councils and the Macarthur Centre for Sustainable Living. It aims to raise awareness of the key sustainability issues in the backyard.
- Implementation of community education programs such as Clothing Bin Contamination Prevention and "Butts Out" cigarette butt prevention campaigns.
- Continuation of rehabilitation works at the decommissioned Lynwood Waste Management Facility. Upgrade and maintenance works were also undertaken at Council's Sanitary Waste Disposal Facility.

ILLEGAL LAND USE ACTIVITIES AND NON-COMPLIANT DEVELOPMENT

MAJOR ISSUES

Impacts associated with unauthorised activities (such as trail bike riding, illegal dumping and arson) and non-compliant



OUR LAND Continued

development (such as pollution of a watercourse) place considerable pressure on biodiversity, the overall quality of the natural environment and neighbourhood amenity.

Council has continued to develop and implement programs in association with the community, local business and other stakeholders to restrict these impacts during the reporting period. These programs contain educational components (designed to increase awareness of environmentally sustainable activities) deterrent components (designed to restrict unauthorised access into bushland areas) and surveillance components (designed to monitor illegal activities).

ACHIEVEMENTS

- Five joint patrols were conducted during the reporting period involving Council and the NSW Police. The patrols targeted trail bike riding in areas known to exhibit high levels of illegal activity, including Smiths Creek Reserve and Noorumba Reserve. The patrols resulted in the issuing of 72 infringement notices and 29 juvenile cautions.
- Steel cable fencing was erected at strategic locations on the perimeter of Noorumba Reserve to minimise the impacts of trail bike riding on the Reserve and to improve local neighbourhood amenity. As two threatened species are on the boundary of the Reserve adjacent to Appin Road, a licence to enable the installation of similar fencing at this site was obtained from DEC during the reporting period.
- 20 environmental audits of businesses were conducted. These audits monitor illegal building work, illegal land use activities and environmental issues. The audits were successful in identifying practices impacting on or having the potential to impact on the environment, and resulted in a number of notices being issued for breaches of relevant legislation.



OUR WATER

MAJOR ISSUES

Campbelltown is fortunate to have a number of waterways within its LGA. They support a diverse range of plant and animal communities, and provide various recreational opportunities for the local community.

The majority of the waterways in the Campbelltown area drain into the Upper Georges River Catchment, either directly into the Georges River itself, or via the Bow Bowing/Bunbury Curran Creek System. A small number of waterways in the south east section of Campbelltown drain into the Nepean River, forming part of the Hawkesbury Nepean Catchment.

While the water quality in the Georges and Nepean Rivers is generally good, the water quality within the Campbelltown LGA has deteriorated over time with increases in urbanisation. The waterways are heavily influenced by stormwater runoff, which contains a range of contaminants such as nutrients, sediment, chemicals, litter and grease. Other factors that effect water quality within the area include pollution incidents, degraded riparian zones (land adjacent to waterways), stream flow modification, aquatic noxious weeds, illegal dumping, and the accumulation of litter in the stormwater system.

These impacts take their toll on the Georges River, which is unable to effectively flush itself of these contaminants. However, Council, in conjunction with key stakeholders, is working toward improving the condition of local waterways, including the Georges River.

ACHIEVEMENTS

- Council reintroduced its water quality monitoring program in January 2006. The purpose of this program is to measure compliance with Recreational Water Quality Guidelines and Protection of Aquatic Ecosystem Guidelines (ANZECC). Monitoring is undertaken throughout the year, with more intense sampling during the summer period. Six sites are tested monthly, being Menangle Bridge, Wedderburn Gorge, The Woolwash at Airds, Frere's Crossing at Kentlyn, Simmo's Beach and Harold St Bridge at Macquarie Fields. Two sites are tested weekly during the December to April period, being Menangle Bridge and Simmo's Beach. This program builds on previous work undertaken through regional water quality monitoring programs, and the results of the program will be collated and reported once a full set of data that accurately reflects seasonal variations has been collected.
- Completion of Stage 3 of the *Campbelltown City Council Alligator Weed & Ludwigia Mapping Project* has been achieved. This Stage involved mapping significant sections of selected waterways within the LGA. *Salvinia* mapping

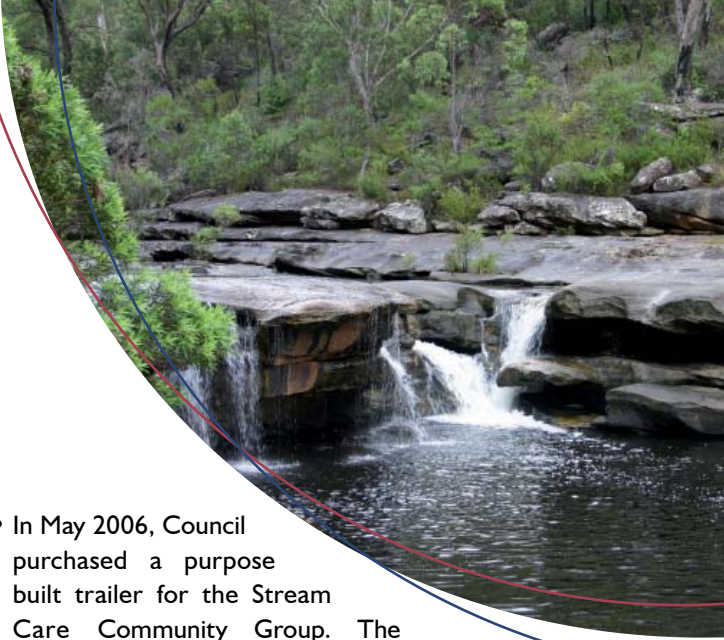
OUR WATER Continued

was also undertaken as part of the Stage 3 project, and a new Water Hyacinth infestation was identified. The results of the mapping project will assist in the identification of priority areas for future weed control.

- Council continued its ongoing aquatic weed treatment program throughout the LGA, with a particular emphasis on the Georges River and the Bunbury Curran Creek System. Weed control activities were based on mapped infestations of aquatic weeds, such as Alligator Weed and Salvinia, and also targeted a new infestation of water Hyacinth identified during Stage 3. As a result of the control activities conducted during the current reporting period, all major aquatic weed infestations mapped within the LGA have now been treated.
- Council continued to place pictorial/educational advertisements in the local newspapers associated with its noxious weed control activities. During the reporting period, a special full page advertisement was run describing the aquatic noxious weeds found within the LGA and appropriate control and containment measures.
- Council provided professional aquatic weed identification training to 15 members of its Stream Care community volunteer group.
- Council continued to support the Georges River Combined Council's Committee and Riverkeeper program through the donation of a truck in February 2006. The truck will assist the Georges River Keeper to carry out clean up and maintenance programs in the Georges River Catchment. Council will undertake the basic servicing of the vehicle for a period of up to two years from the date of transfer.



- Council's Stream Care Community Group continued to work in Noorumba Reserve during 2005/2006. The group of 21 volunteers participated in regular activities including bush regeneration and weed control, revegetation works, BBQs/social events and water quality monitoring. All volunteers were also provided with the opportunity to participate in TAFE accredited Bushcare Training.

- 
- In May 2006, Council purchased a purpose built trailer for the Stream Care Community Group. The trailer is being used to transport the group's equipment (including bush regeneration tools and first aid kits) and weed and rubbish material from Noorumba Reserve. The trailer was purchased with funding assistance from the Hawkesbury Nepean Local Government Advisory Group.
 - Educational pamphlets including specialty pamphlets for Aerated Wastewater Treatment Systems and Septic Tank and Absorption Trenches were developed and distributed by Council. The purpose of these pamphlets is to inform residents of the maintenance requirements, as well as common problems associated with these systems and how they should be addressed. Information relating to these systems was also updated on Council's website.
 - Council has continued to implement its catchment based Environmental Review Program. During the reporting period, this program targeted the Biriwiri-Monastery Catchments, which incorporates parts of the suburbs of Campbelltown, Blair Athol, Blairmount and Leumeah. Within this catchment area, 405 households received information packs on a range of environmental subjects. 89% of survey respondents indicated they would make changes to their households for environmental reasons, as a result of the project. In addition, 115 businesses (predominately in the Blaxland Road area) received an information pack designed to help them enhance their efficiency and environmental performance.
 - The Registered Business Inspection Program has also continued to be implemented. The purpose of this program is to monitor compliance of registered premises with a range of environmental criteria and identify measures to improve efficiency and environmental performance. During the reporting period, the 11 premises inspected complied with licence conditions and each received a certificate of registration in the program. The high degree of compliance of the participating businesses reflects the ongoing success of the program.



OUR COMMUNITY

MAJOR ISSUES

The major issues and trends affecting the quality of life in Campbelltown have been identified and addressed through Campbelltown City Council's Social Plan (2004-2009).

The Campbelltown City Social Plan aims to answer three important questions:

- What are the key quality of life issues impacting on the community now?
- What are the key strategic challenges that will impact on the community in the future?
- What should Council and its partners do to address these issues and challenges to ensure quality of life conditions for its residents are maximised?

The key quality of life issues were identified through the analysis of statistical data and responses to community consultations. The key strategic challenges were expressed as 21 dynamics (eg. the development of Campbelltown as a regional centre, and the ageing of the population), which were identified through the research for the Social Plan.

The strategies in the Social Plan were then developed in response to the key issues and strategic challenges. The actions resulting from the Social Plan represent Council's focus and commitment in addressing the quality of life needs of the City's residents. This includes the development of cultural services and facilities. By having access to cultural facilities and associated services, communities can actively engage with and develop culture. It is through engaging with culture that communities can contribute to defining a local identity and sense of place.



ACHIEVEMENTS

- The City Wide Traffic Model has been completed and is being used to help Council assess the impact of new developments and ongoing traffic issues. It is also assisting Council to identify ways to improve existing traffic networks and to identify relevant funding sources for implementing improvements.
- The Crime Prevention Plan has been adopted by Council, and endorsed by the Attorney General's Department. A permanent full time Community Safety Officer has been appointed to implement the Plan and funding has been received from the Federal Government to implement crime prevention strategies. Many strategies identified within the Plan are already being implemented by Council.
- Childhood obesity programs are running at Council's Leisure Centres. Council currently provides two customised gymnastics programs called Tiny Tots and Kids Active.
- Council has adopted the Cultural Plan and many strategies from the Plan have been implemented. Council now provides a broad range of visual and performing arts through the very successful Campbelltown Arts Centre.
- Council is addressing Barriers to Education and Employment through Partners in Employment (PIE). Council was instrumental in PIE being formed. PIE consists of Jobnetwork agencies, training providers, government agencies, and support services working together to improve the processes and resources that enable people to find and stay in work.
- Improved customer services are now available through Council's new website. Council news is available in large print and community groups can upload their events onto the community event calendar.
- The Macarthur Community Forum, with support from Campbelltown City Council, has established a Non Government Organisations Managers Forum. The forum will assist smaller organisations to become more viable, and to further partnerships around administrative functions and the private sector. The Managers' Forum meets every second month.



OUR HERITAGE

INDIGENOUS HERITAGE

MAJOR ISSUES

The indigenous heritage of Campbelltown not only encompasses archaeological sites and artefacts, but also includes culture and places of cultural significance, history, language and spiritually. Campbelltown is home to the Dharawal people and there are more than 350 known indigenous sites, places and relics within the Campbelltown LGA, which include rock art, scarred trees, open camp sites, and axe grinding grooves.

With increasing urbanisation and visitation to bushland areas, these sites are increasingly impacted on by development, vandalism, arson and recreational pressures. Natural weathering is also affecting some sites.

ACHIEVEMENTS

- Council was awarded funds through the Metropolitan Greenspace Program to assist with the preparation of an *Aboriginal Cultural Heritage Management Plan* for the Basin Reserve, Kentlyn.
- Guidelines for Aboriginal Heritage Impact Assessment were adopted as part of the Campbelltown (Sustainable City) Development Control Plan.
- An on-site meeting to discuss issues affecting the preservation of a site known as the Bull Cave was held with representatives from the Cubbitch Barta Native Title Claimants and the Tharawal Local Aboriginal Land Council. Actions arising from this meeting will be implemented during the next reporting period.
- More than 1000 people participated in the family fun day at Koshigaya Park for Naidoc Week in July 2006. The day featured information stalls, rides and entertainment. The touch footy comp sports day attracted more than 250 people, and more than 150 people participated in the first Macquarie Fields family NAIDOC day. This day featured cultural art activities, sports and the immensely popular dreamtime zoo, which involved Aboriginal elders talking about animals and their dreamtime stories.
- The Festival of Fisher's Ghost Street Parade was held in November 2006, with the Aboriginal Advisory Sub Committee participating with local dancers.
- Three members of the Aboriginal Advisory Sub Committee were awarded Jubilee Awards during Seniors Week in April 2006. The Jubilee Awards recognise community members who have lived in and contributed to, the Campbelltown area for more than 50 years.
- A memorial ceremony for the Appin Massacre was held. 500 people attended the ceremony.
- There has also been continued sponsorship and support

for the Carwoola Seniors Seafood Luncheon, which attracted 350 participants. Sponsorship included venue hire, rubbish disposal, insurance and volunteer staff.

- 85 young Aboriginal people attended the Aboriginal Youth Forum at the Civic Centre, which launched Youth Week activities.
- An AFL activity day was held at the library for Heritage Week, and was attended by 60 school children. Adam Goodes and Michael O'Laughlin from the Sydney Swans were in attendance, and traditional games were played.
- During May, corporate activities were held for Sorry Day at the Arts Centre. The film "Children of the Sun" was shown, and there was also a talk by a Link Up caseworker. Link Up works to bring Aboriginal people together.
- The First Reconciliation Walk was held for Reconciliation Week. More than 250 people participated in the walk from Mawson Park to Koshigaya Park, where a BBQ lunch was served.
- All the activities planned by Council's Events Working Party had input from the Aboriginal Advisory Sub Committee. A positive outcome of this relationship was the modification of the Jubilee Awards criteria to reflect the needs of the Aboriginal community.

EUROPEAN HERITAGE

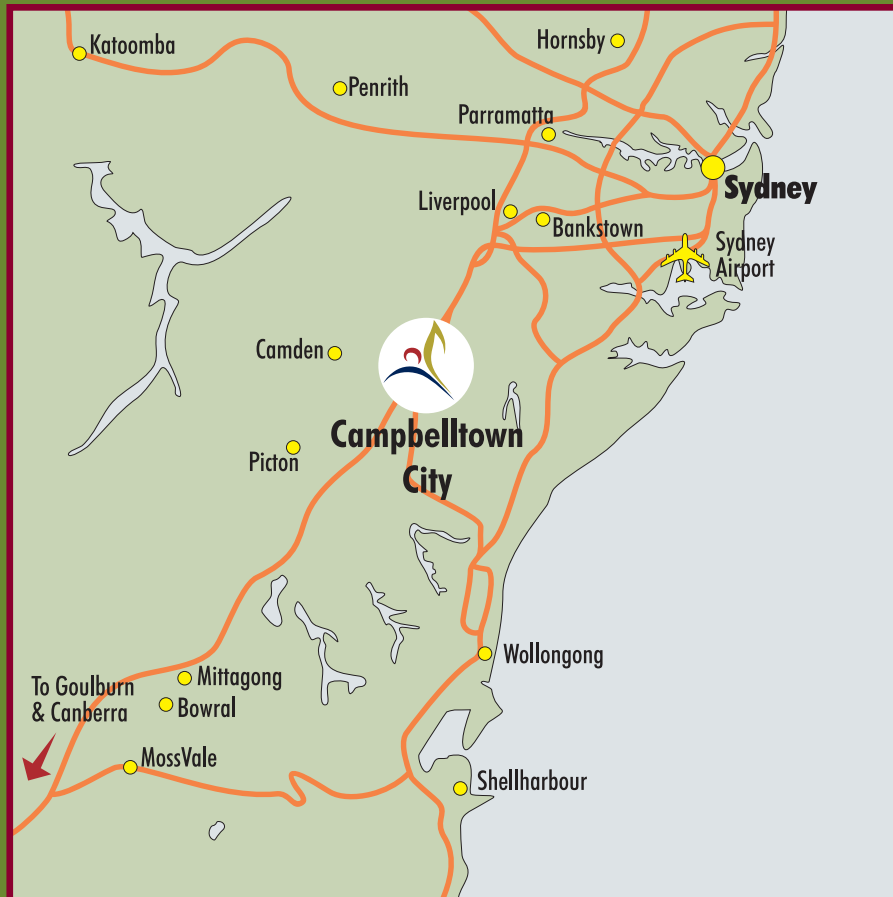
MAJOR ISSUES

The Campbelltown area also boasts a rich European heritage. There are 102 items listed on the Campbelltown Heritage Register including cottages, monuments, forests, and bridges. Twenty items are currently listed under the State Heritage Register.

These sites have the potential to be impacted upon by a number of issues. Some privately owned heritage items are facing the risk of deterioration due to the high maintenance costs confronting owners. This is further compounded by the lack of Federal or State level funding mechanisms to assist owners with the maintenance of their properties.

ACHIEVEMENTS

- Under Council's Local Heritage Fund, the following projects were funded during the 2005/2006 period:
 - Photographic archival record of Hansen's Cottage, Minto.
 - Renovation of the roof and verandah of The Manse, Campbelltown.
 - Renovation of the roof of Taminar, Campbelltown.
 - Replacement of the heritage plaque for the Parsonage of St Peters Church, Campbelltown.
- The *Heritage Festival* was successfully held in April 2006 and included the annual Heritage Forum, Heritage Bus Tour and Photographic Display.



www.campbelltown.nsw.gov.au



Campbelltown City Council, PO Box 57, Campbelltown, NSW 2560