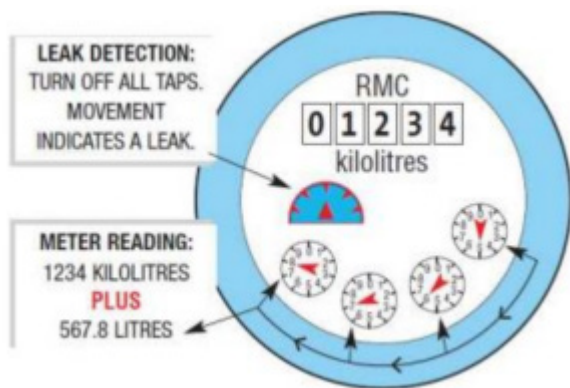


HOW TO READ A WATER METER

Find your water meter. it is usually at the front of your home. On the face of the meter you will see a series of numbers. The numbers measure the amount of water used in kilolitres and litres. On most water meters the black numbers measure kilolitres (thousands of litres) and the red numbers measure litres.

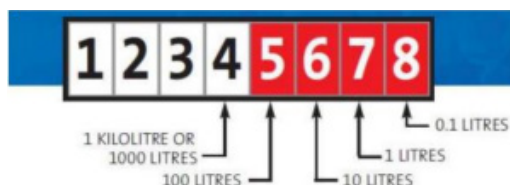


DIAL FACE DISPLAY METER



Kilolitres are shown by the black digital display and litres by the dials. The dials are read from right to left. When a pointer rests between two numbers use the lower number. The current reading on this meter is the same as the one on the previous page: 1,234 kilolitres and 567.8 litres or 1,234.5678 kilolitres.

DIGITAL DISPLAY METERS



The current reading on this meter is 1,234 kilolitres plus 567.8 litres or 1,234.5678 kilolitres.

Now that you know how to read your water meter use our monitoring card to track how much water your household is using and when.