



School Zone Parking Offences

Current as at 16 October 2023



No Stopping

In the area in the direction of the arrow, you must not stop your vehicle at any point on the road or kerb, unless there is a medical or other emergency.

Up to
\$514

+ 2 Demerit
Points



No Parking

You have no more than 2 minutes for drop-offs or pick-ups of passengers or goods and the driver must stay within 3 metres of your vehicle

\$215

+ 2 Demerit
Points



Bus Zone

In the direction of the arrow or arrows you are not allowed to stop your vehicle unless you are driving a bus.

\$387

+ 2 Demerit
Points



Double Parking

You are not permitted to stop or park your vehicle alongside another vehicle that is already parked parallel to the kerb.

\$387

+ 2 Demerit
Points

- **STOP in a NO STOPPING zone: \$387 + 2 Demerit Points**
- **STOP on or near a Children's or Pedestrian Crossing**
(within 20m on approach & 10m on departure side of crossing): **\$514 + 2 Demerit Points**
- **STOP on path/strip in built up area: \$387 + 2 Demerit Points**

Please Note: fines subject to change without notice.

For more information, call Campbelltown City Council
on 4645 4000 or visit campbelltown.nsw.gov.au





School Zone Traffic Offences

Current as at 16 October 2023



Speeding Offences

School Zone speeding offences attract higher fine and demerit points than other speeding offences.

Up to
\$4,385

+ 7 Demerit Points
PLUS Double
Demerits during
gazetted periods



Mobile Phone Use

Drive using a hand-held mobile phone in a School Zone.

\$514

+ 5 Demerit Points
PLUS Double
Demerits during
gazetted periods

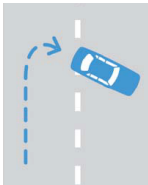


Children's Crossing

Disobey hand-held stop sign at Children's Crossing or approach Children's Crossing too quickly to stop safely.

\$481

+ 3 Demerit Points



U-turns

Make a U-Turn without giving way to pedestrian or vehicle in a School Zone

\$387

+ 3 Demerit Points

For a full list of all new penalties and offences, please visit rms.nsw.gov.au or phone the Transport NSW on 13 22 13

Please Note: Fines subject to change without notice.

These penalties apply to offences in schools zones only while the zone is active.

For more information, call Campbelltown City Council
on 4645 4000 or visit campbelltown.nsw.gov.au

