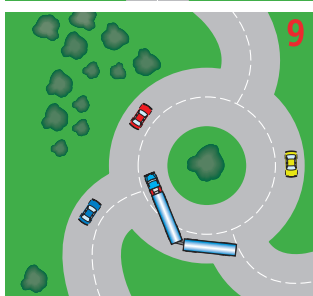
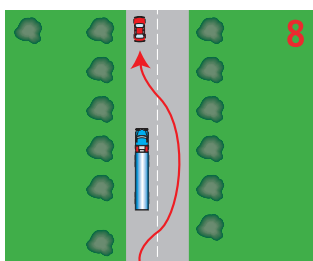
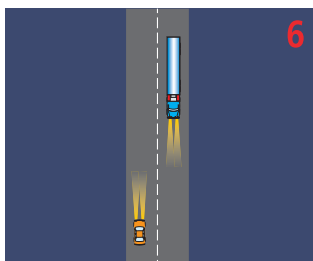
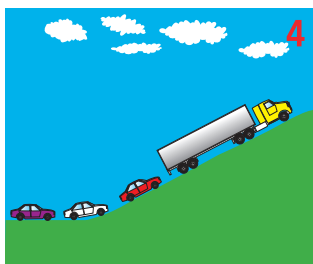
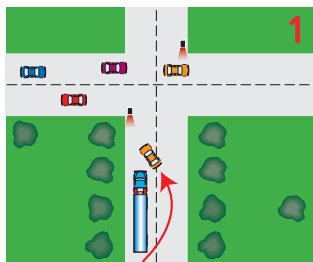


# TRUCKIE'S TOP 10 TIPS FOR ROAD USERS



## 1. CUT OUT CUTTING IN

Please don't cut in front of trucks as they slow for traffic lights or when out on the highway. A truck needs more road space to stop than you think, so leave plenty of room in front of the truck. A loaded B-Double can weigh 40-50 times more than a car, so avoid the risk of collision.

## 2. DO NOT OVERTAKE TURNING VEHICLE

There's a sign on the back of trucks that says 'DO NOT OVERTAKE TURNING VEHICLE'. It warns that the truck is at least 7.5 metres long and needs more room when turning. This sign allows trucks to legally turn from the centre lane at intersections, corners and roundabouts. So stay back, don't move into the blind spots to the left of the truck cabin or drive directly behind the trailer. Remember,

**IF YOU CAN'T SEE THE TRUCK DRIVERS FACE IN THE TRUCK MIRRORS, HE CAN'T SEE YOU.**

## 3. MAINTAIN YOUR SPEED

When being overtaken by a truck please maintain your speed, don't accelerate. If anything, ease up on the accelerator. When the truck has passed, flash your headlights to tell the truckie it's safe to move back in. This helps the truck pass safely and improves your own safety too.

## 4. 100 KPH SPEED LIMITING

Speed limiting means no engine power is delivered above 100 km/hr, however gravity can push us faster downhill. Truck drivers like to be at the legal speed approaching hills in order to lessen delays to all traffic, but if we slow going uphill or when overtaking, we are doing the best we can.

## 5. ROAD POSITIONING

A truck uses its entire lane so avoid travelling right on the centreline. Use all the road available to give yourself sufficient space and lessen any buffeting from air turbulence, particularly if towing a boat or caravan. If stopped or broken down, park well clear of the roadway. Use hazard lights and to be safely seen at night, ensure headlights are switched off and parking lights are on.

## 6. LIGHTS AT NIGHT

High beam glare contributes to night driving fatigue. Don't blind, then dip. Dip before reaching a crest or curve or when flashed by a truck. When coming up behind a truck please dip early as truck mirrors are large and don't have an anti-glare position. Check your headlight alignment, particularly if heavily loaded and please, only use fog lights in fog or poor visibility.

## 7. TOWING CARAVANS & BOATS

When being overtaken by a truck, maintain your speed and don't move off the road. Moving left only makes controlling your trailer more difficult. Only slow when the truck moves out to pass. Quality mirrors, towing hitches and good advice are priceless. A CB or UHF radio can be well worthwhile.

**WE FULLY SUPPORT THE IDEA AND BENEFITS OF CARAVAN CB-UHF 18 AND CB 18.**

## 8. OVERTAKE WITH CARE

Stay well back and not close behind the truck. Be certain you can see sufficient clear road ahead. When you're sure it's safe, signal, move out, give a quick flash of the headlights and pass quickly but sensibly. Don't move back in until you see both the truck's headlights in your mirrors and don't slow down.

**PLEASE, IF YOU CAN'T SEE, DON'T PASS.**

## 9. ROUNDABOUTS

The 'DO NOT OVERTAKE TURNING VEHICLE' sign applies at roundabouts too, so please stay back. Larger trucks make wide turns and often need the entire roadway. Truck drivers try and anticipate traffic flows at roundabouts to avoid stopping. The truck isn't racing you into the roundabouts; the driver is trying to facilitate the smooth flow of traffic. A forced stop and then a slow start can often stop all the traffic.

## 10. ROAD COURTESY

Road courtesy and some patience may save your life; it could also prevent road rage. We would much rather a friendly wave of thanks than a shaken fist. Driver education and awareness of heavy vehicles can only improve safety for all road users. Like you, truck drivers want to get home safely to their families too, so let's all learn to share the road.

**BRIDGESTONE**

**BRIDGESTONE TYRE CENTRES**

